



*San Francisco Public Library*

# MISSION BRANCH LIBRARY

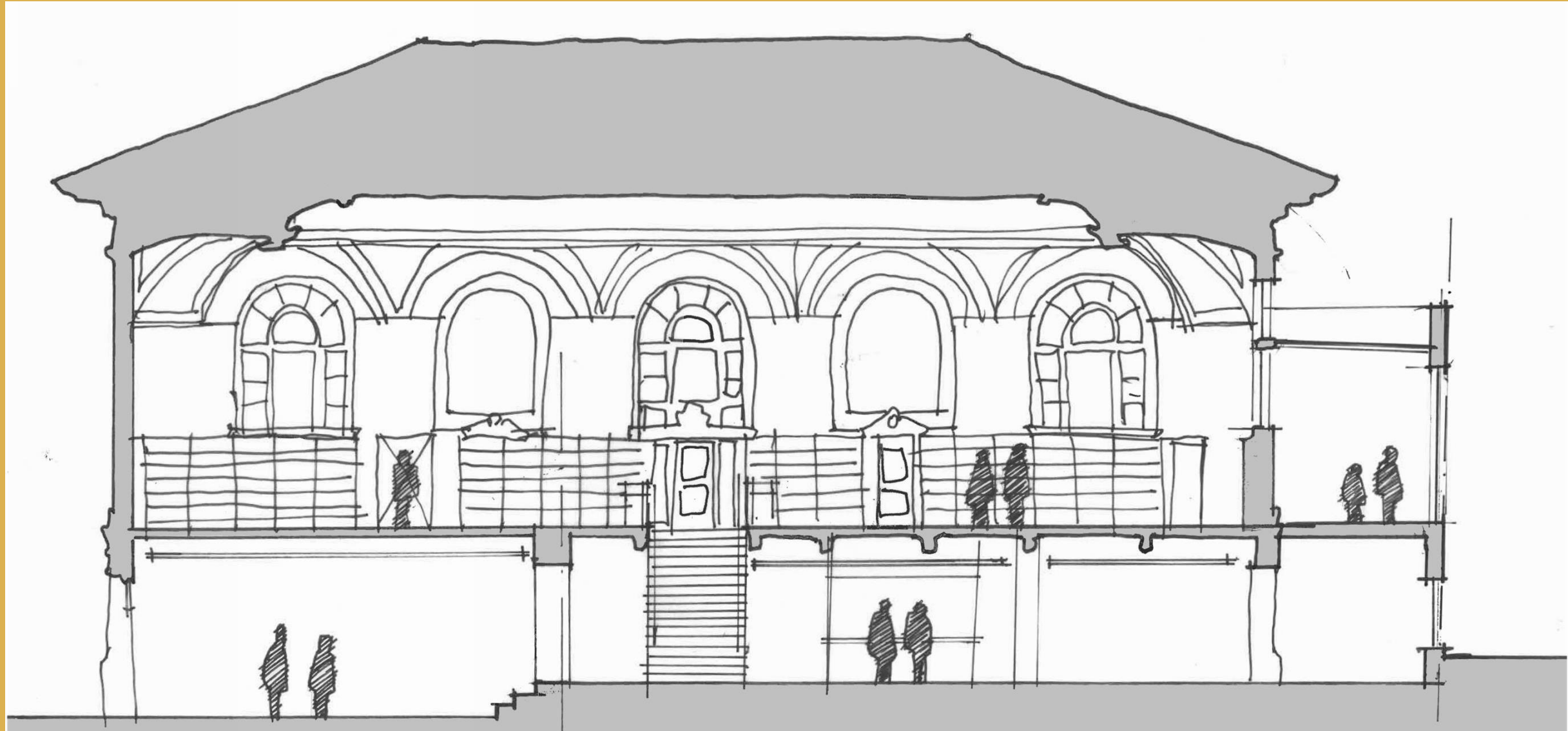
## COMMUNITY MEETING



# WELCOME!

- Welcome and introductions
- Project overview
- Introduction of architects
- Library design trends
- Discussion on services, needs and priorities for our renovated branch
- Next steps
- Upcoming
- Other, announcements and adjourn

# PROJECT OVERVIEW





# GUIDING PRINCIPLES

- Libraries for the 21<sup>st</sup> Century
- Flexible and Adaptable Building Designs
- Multifunctional Community Program Areas
- Transparency and Ease of Wayfinding
- Preservation of Historic Carnegie Reading Rooms

# SCHEDULE

- Budget approval from the Mayor & the Board of Supervisors
- Engage community partners: **In progress**
- Community engagement meetings: **Summer - Fall 2018**
- Identify sites for temporary library services: **In Progress**
- Schematic Design: **Fall 2018**
- Construction Drawings: **Winter 2019**
- Contractor Selection/ Bidding: **Summer 2019**
- Construction: **Fall 2019 - 2020**

# INTRODUCTION OF ARCHITECTS





# PAST PROJECTS: ORTEGA LIBRARY

Architect: San Francisco Public Works, 2011





# PAST PROJECTS: RICHMOND BRANCH LIBRARY

Architect: San Francisco Public Works, 2009





# PAST PROJECTS: GOLDEN GATE VALLEY

Architect: Paulett Taggart Architects/ Tom Eliot Fisch, 2011





# PAST PROJECTS: SAN MATEO PUBLIC LIBRARY

Architect: EHDD Architecture, 2006





# LIBRARY TRENDS

- Impact of technology on information delivery and availability
- Intense focus on community, access, and expansion of services
- Using marketing and retail strategies to improve experience
- Utilizing technology to streamline staff work and improve service



# DESIGN PRINCIPLE: FLEXIBLE & ADAPTABLE BUILDINGS





# DESIGN PRINCIPLE: FLEXIBLE & ADAPTABLE BUILDINGS





# DESIGN PRINCIPLE: MULTIFUNCTIONAL COMMUNITY ROOMS





# DESIGN PRINCIPLE: MULTIFUNCTIONAL COMMUNITY ROOMS





# DESIGN PRINCIPLE: TRANSPARENCY & EASE OF WAYFINDING





# DESIGN PRINCIPLE: TRANSPARENCY & EASE OF WAYFINDING





# DESIGN PRINCIPLE: TRANSPARENCY & EASE OF WAYFINDING





DESIGN PRINCIPLE:  
PRESERVATION OF HISTORIC CARNEGIE  
READING ROOMS





# Discussion on services, needs and priorities for our renovated branch





# UPCOMING

Tues, June 12 9a.m. FAMILY OUTREACH

May COMPILE SURVEYS

Fall CONCEPT DESIGN WORKSHOPS

Please complete the Exit Survey

Thank you!

