

San Francisco Public Library
MISSION BRANCH LIBRARY

COMMUNITY MEETING | 01.24.2019



San Francisco Public Library

WELCOME!

- Introductions
- Past Progress
- Guiding Principles
- Survey Findings
- Design ideas
- Next Steps & Exit Survey

PAST PROGRESS

May 2018

- Completed Branch Library Feasibility Study
- Mission Branch funded, \$19.8M
- Branch Survey
- Community Meetings
- Began preliminary design

SURVEY FINDINGS

405 SURVEYS COMPLETED

78% English & **22%** Spanish; **69%** visited the branch once a week or more

TOP COLLECTIONS

New books, adult & children's books, DVDs/ Blu-rays, non-English books & eResources

TOP IMPROVEMENTS

Community meeting room, more bathrooms, teen area, quiet room, & restoring historic architecture

TOP PROGRAMS & SERVICES

Immigrant resources, adult skill training, computers, children's programs & staff to help on both floors

GUIDING PRINCIPLES

- Libraries for the 21st Century
- Flexible and Adaptable Building Designs
- Preservation of Historic Carnegie Libraries
- Multifunctional Community Program Areas
- Transparency and Ease of Wayfinding

GUIDING PRINCIPLE: Library for the 21st Century



SAN FRANCISCO PUBLIC WORKS
CITY & COUNTY OF SAN FRANCISCO



MISSION BRANCH LIBRARY COMMUNITY MEETING
San Francisco Public Library | 01.24.2019

GUIDING PRINCIPLE: Flexible and Adaptable Building Design



SAN FRANCISCO PUBLIC WORKS
CITY & COUNTY OF SAN FRANCISCO

MISSION BRANCH LIBRARY COMMUNITY MEETING
San Francisco Public Library | 01.24.2019

GUIDING PRINCIPLE: Preservation of Historic Carnegie Libraries



GUIDING PRINCIPLE: Multifunctional Community Areas



SAN FRANCISCO PUBLIC WORKS
CITY & COUNTY OF SAN FRANCISCO



MISSION BRANCH LIBRARY COMMUNITY MEETING
San Francisco Public Library | 01.24.2019

GUIDING PRINCIPLE: Transparency and Ease of Wayfinding



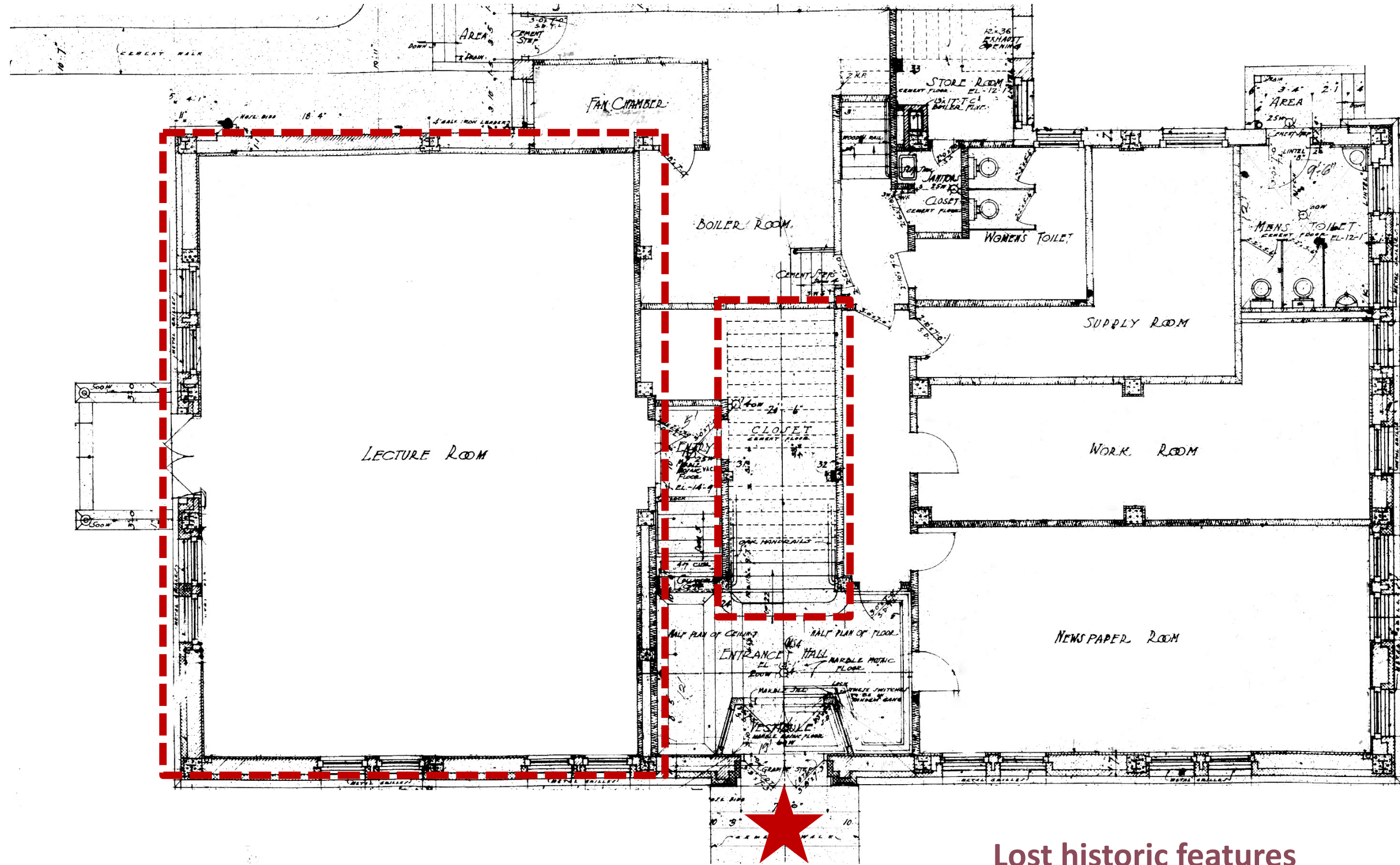
SAN FRANCISCO PUBLIC WORKS
CITY & COUNTY OF SAN FRANCISCO

MISSION BRANCH LIBRARY COMMUNITY MEETING
San Francisco Public Library | 01.24.2019

EXISTING BUILDING

ORIGINAL FIRST FLOOR PLAN (1914)

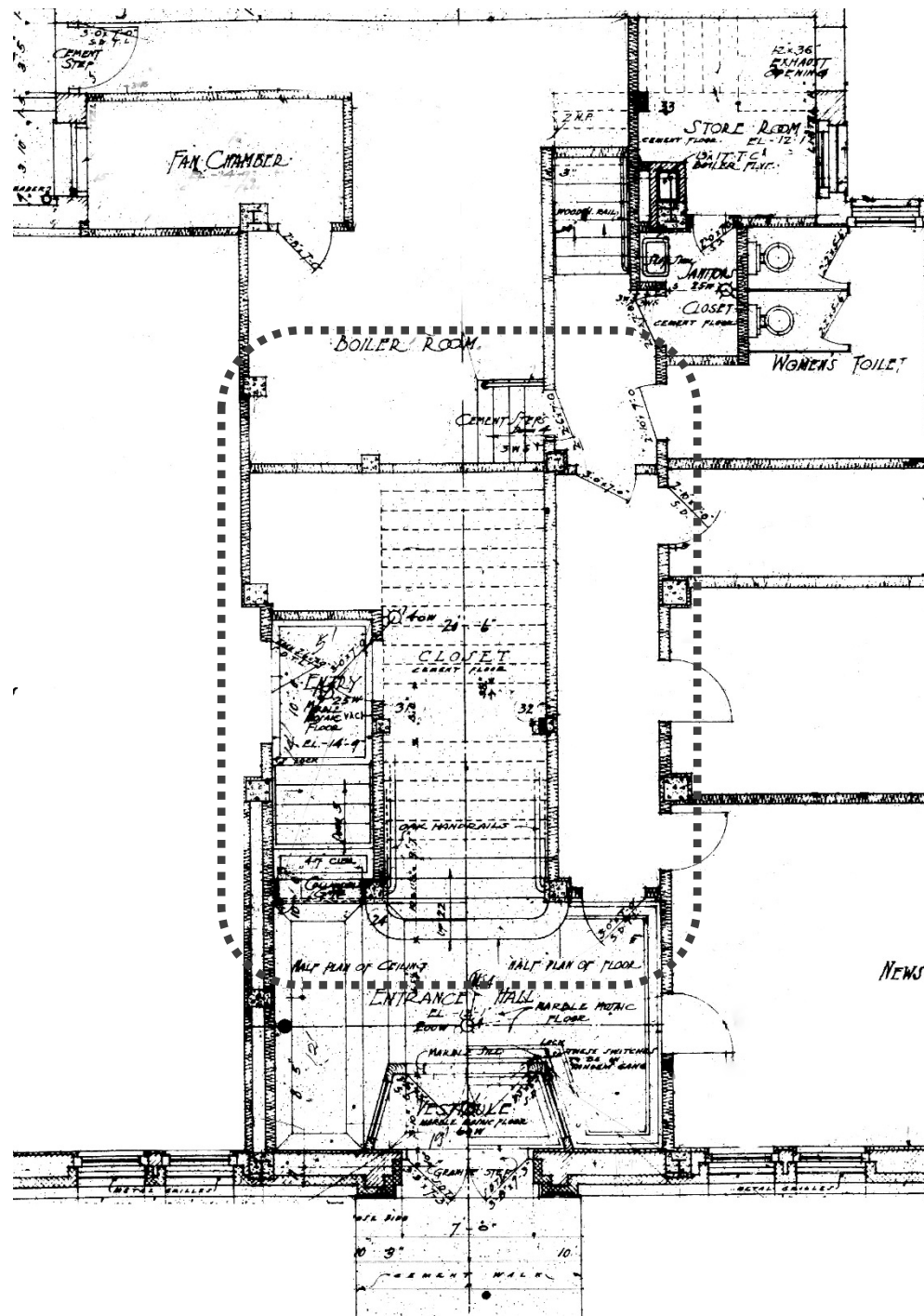
BARTLETT STREET



24TH STREET

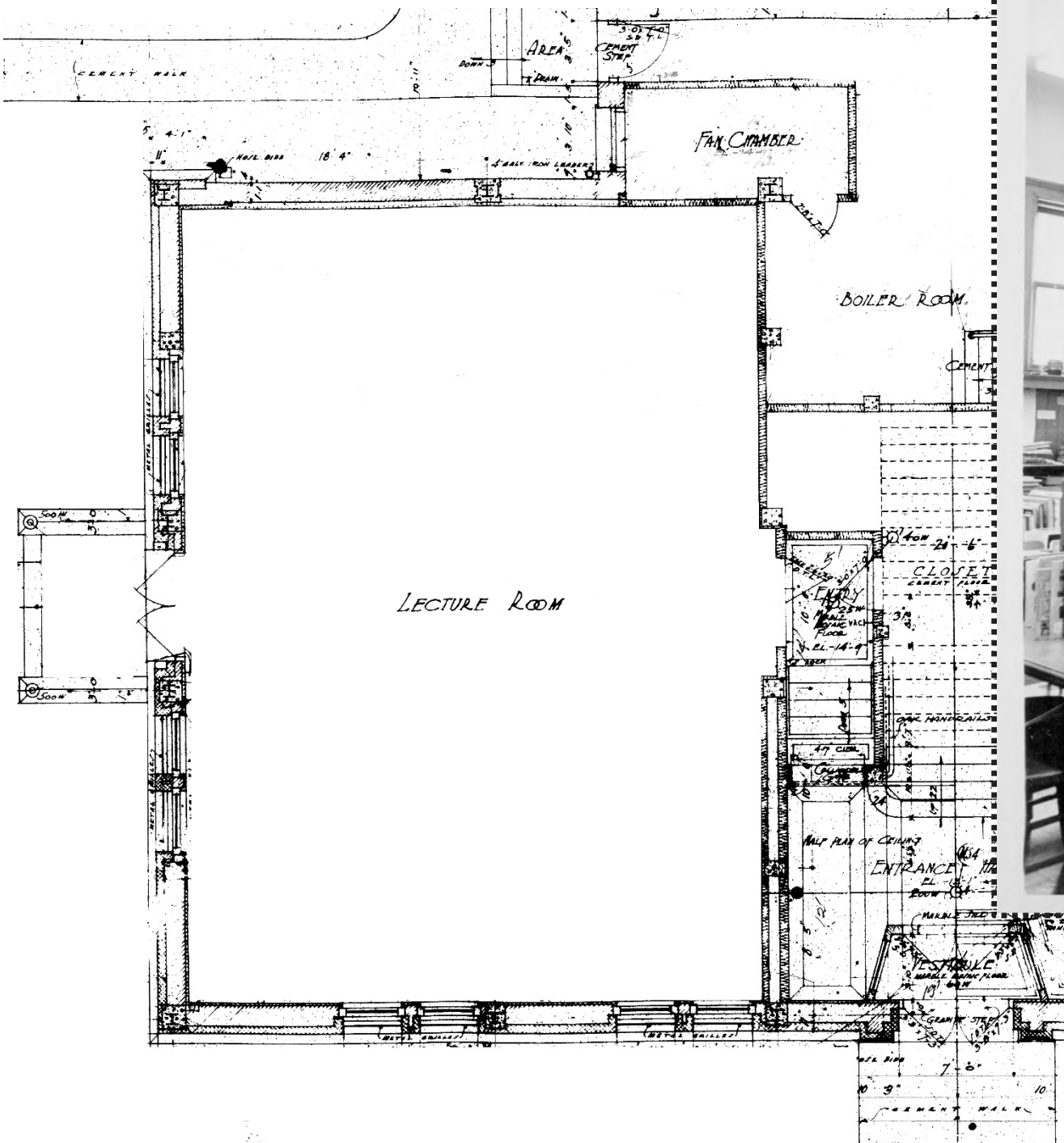
Lost historic features

HISTORIC STAIR (1914)



STAIRCASE AT NOE VALLEY BRANCH (SIMILAR)

ORIGINAL LECTURE ROOM (1914)



CURRENT FIRST FLOOR PLAN (1997)

BARTLETT STREET



24TH STREET

WHAT WE HEARD...

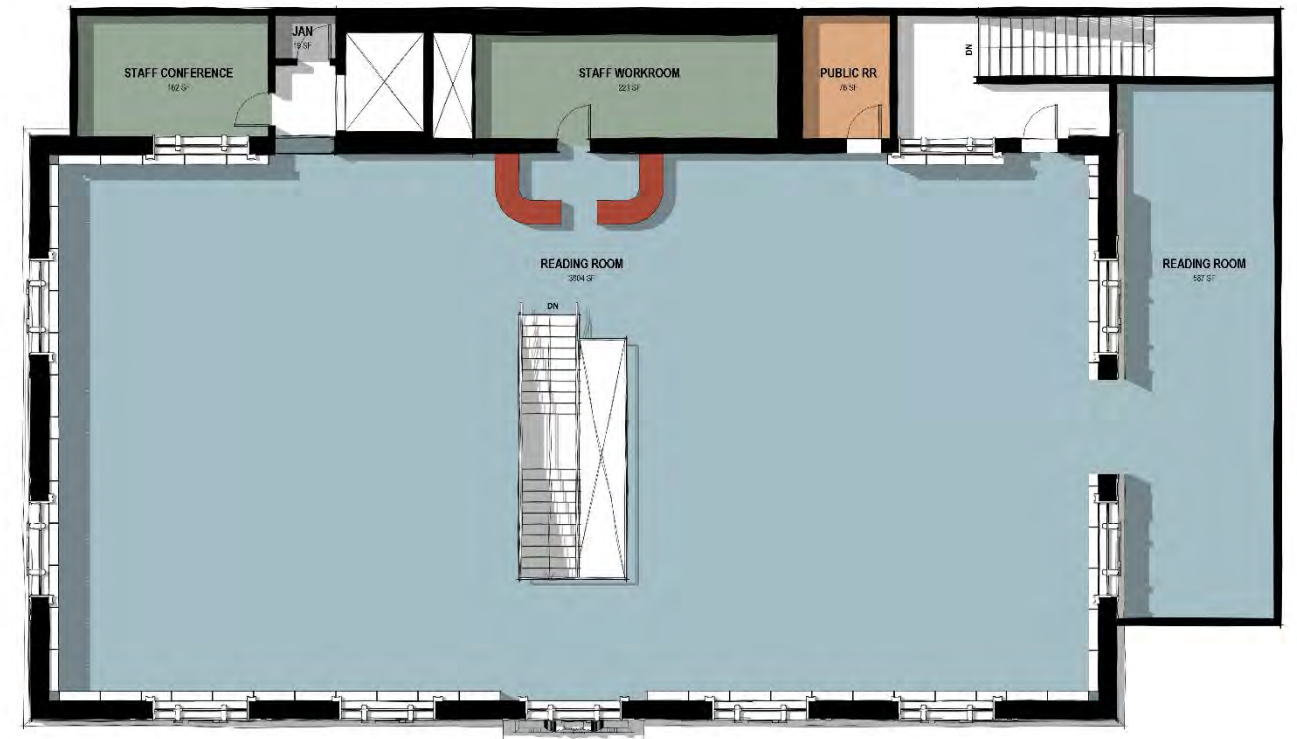
- More Restrooms
- Maintain historic character
- Community Program area
- Dedicated Teen Area
- Love the Children's Room and Storytime
- Library should reflect neighborhood culture
- Expand the building
- Sustainability & Resiliency
- First floor too congested

DESIGN IDEAS

FLOOR PLAN TEST FITS



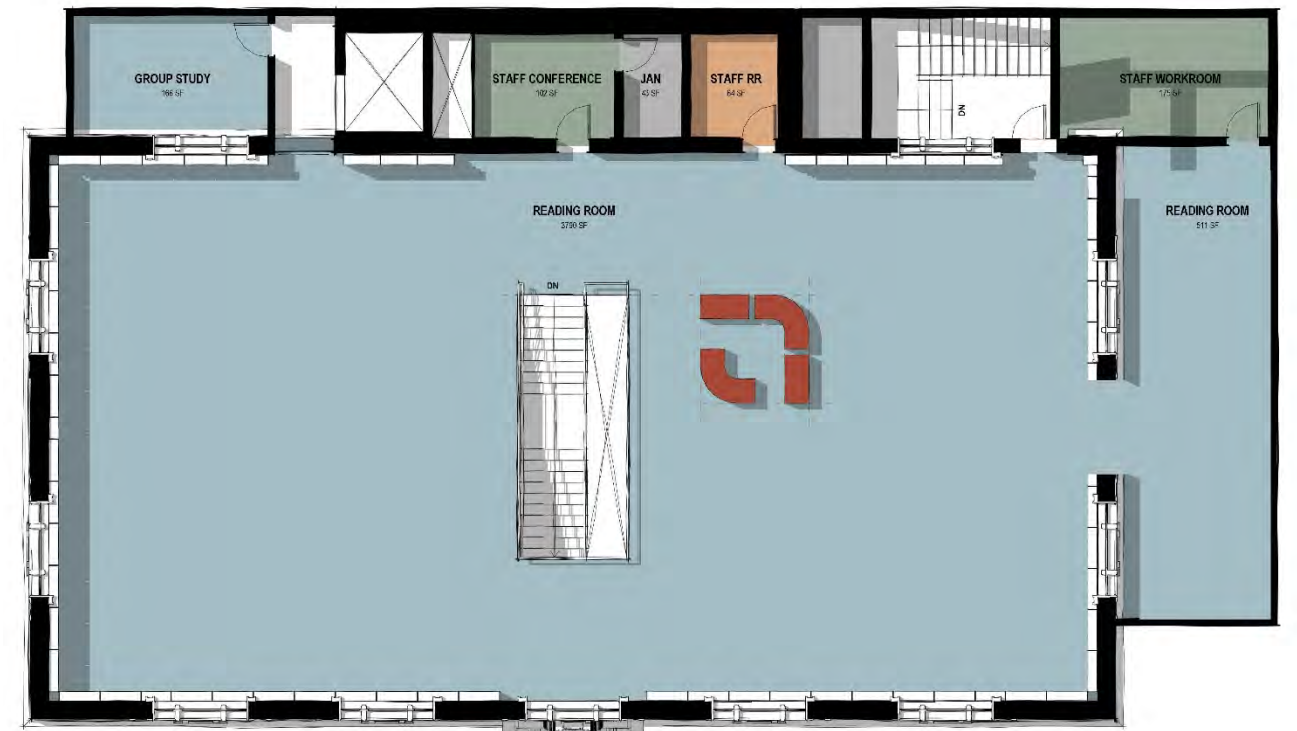
Example A FIRST FLOOR



SECOND FLOOR

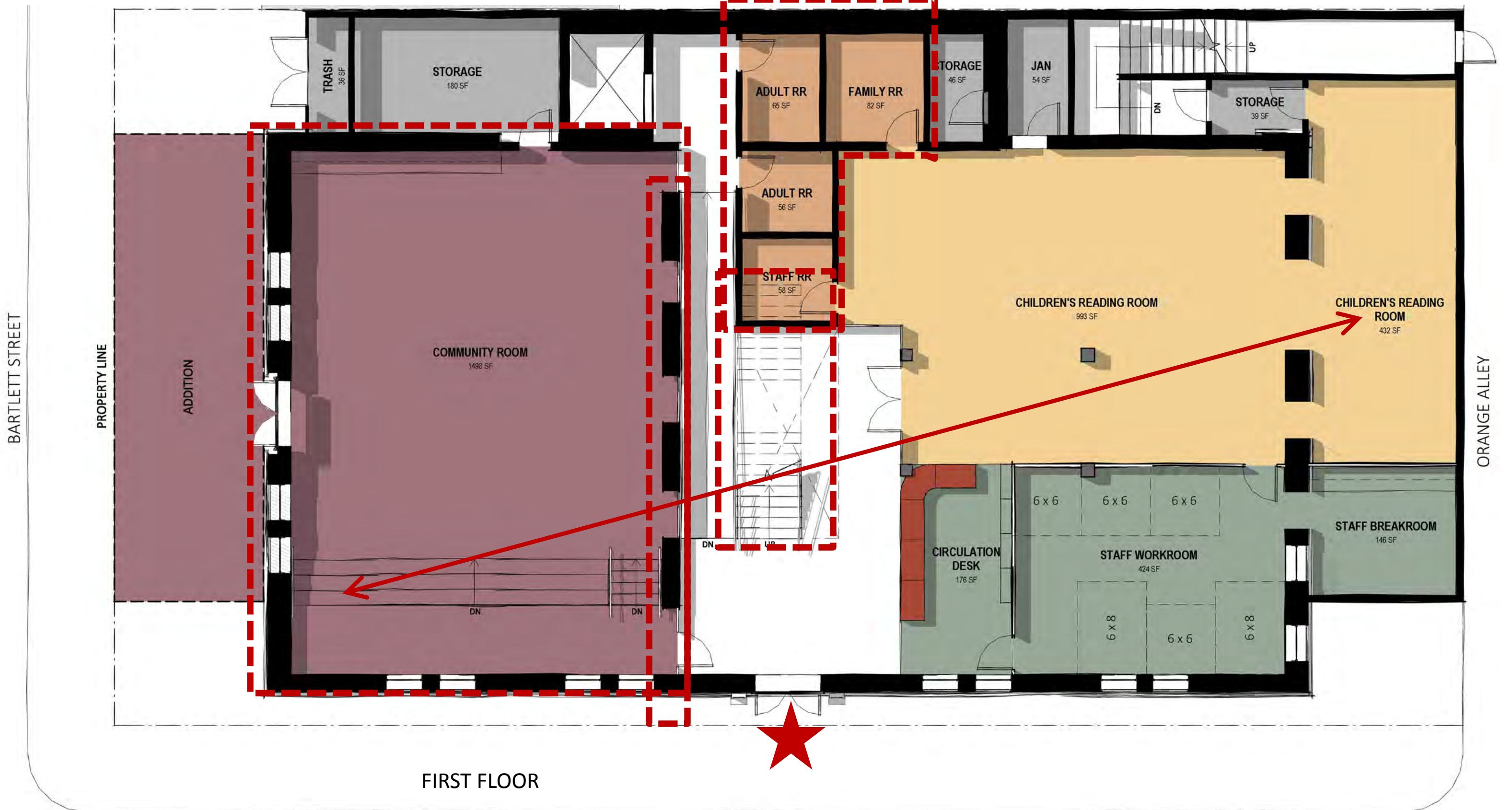


Example B FIRST FLOOR

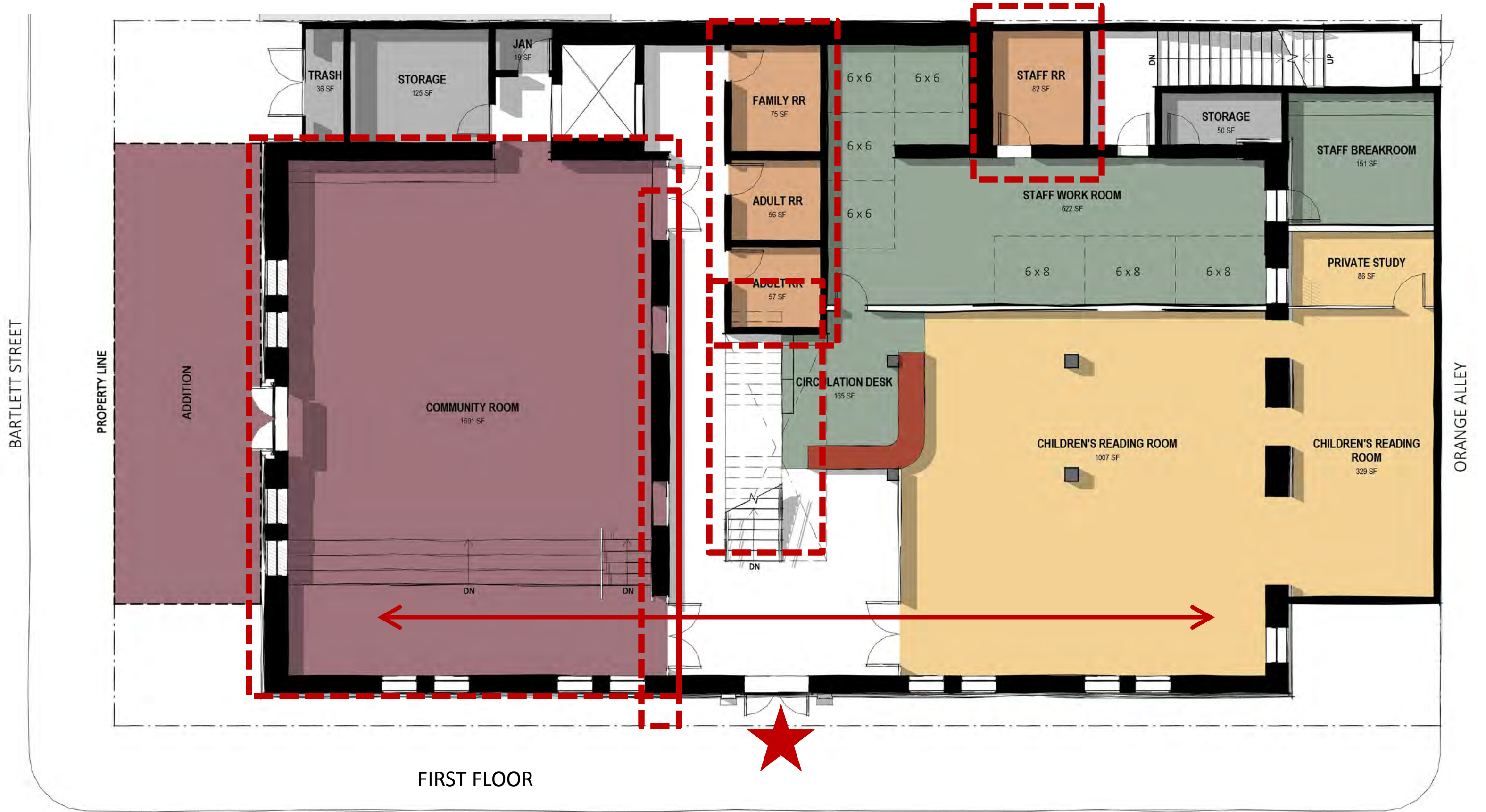


SECOND FLOOR

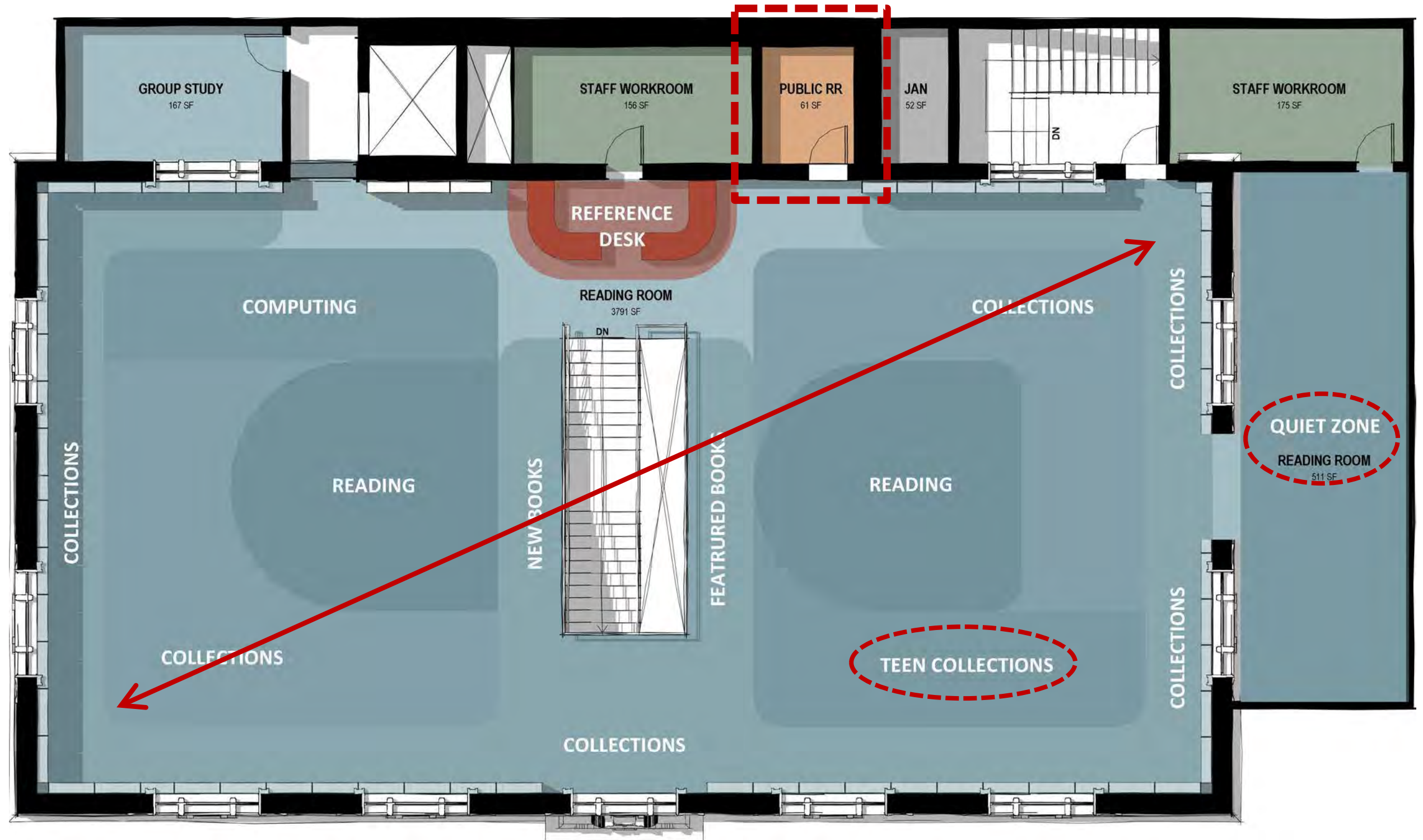
FLOOR PLAN TEST FIT | Example A



FLOOR PLAN TEST FIT | Example B



FLOOR PLAN TEST FIT | Example A

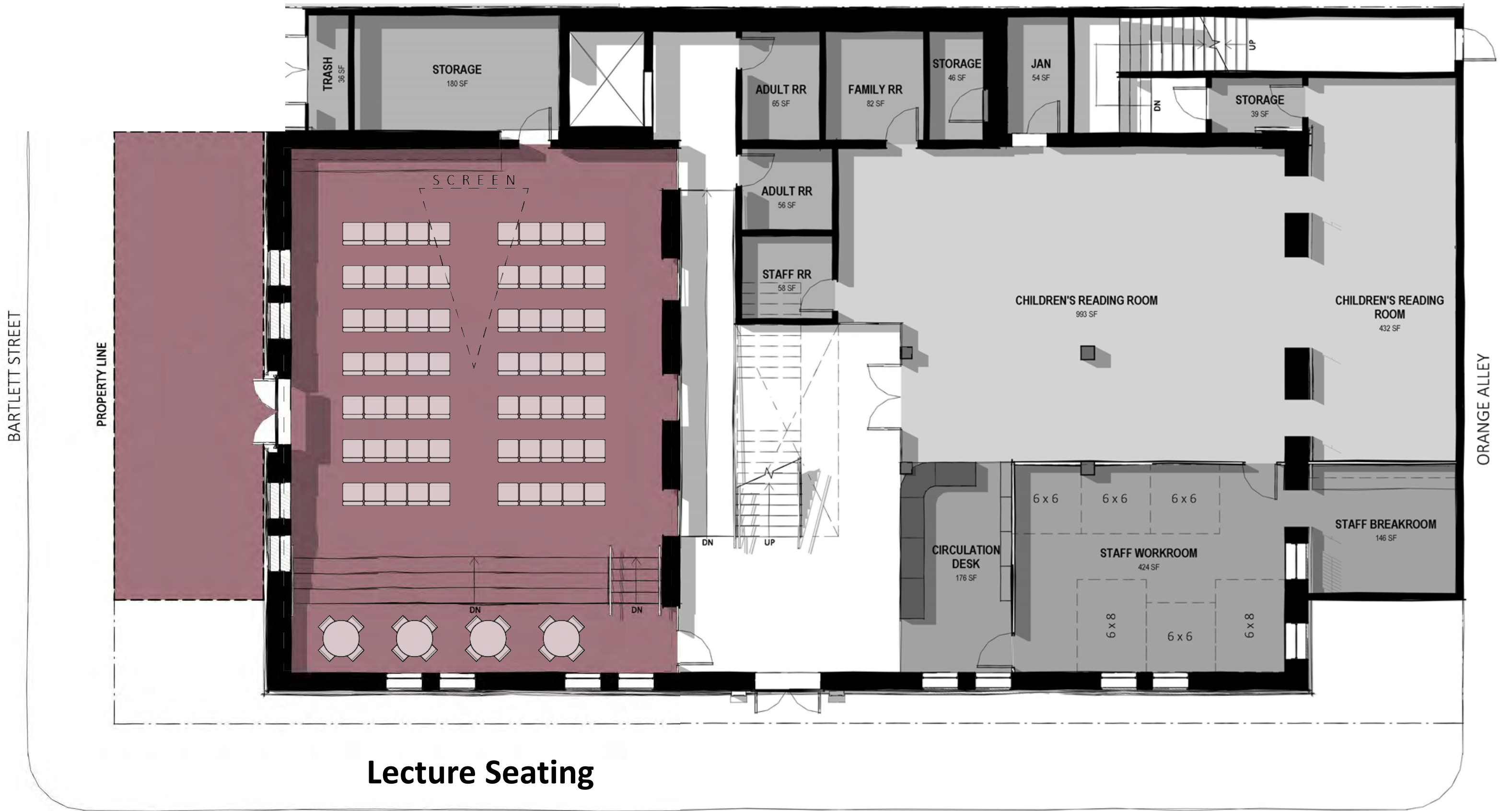


SECOND FLOOR

FLOOR PLAN TEST FIT | Community Multifunctional Areas

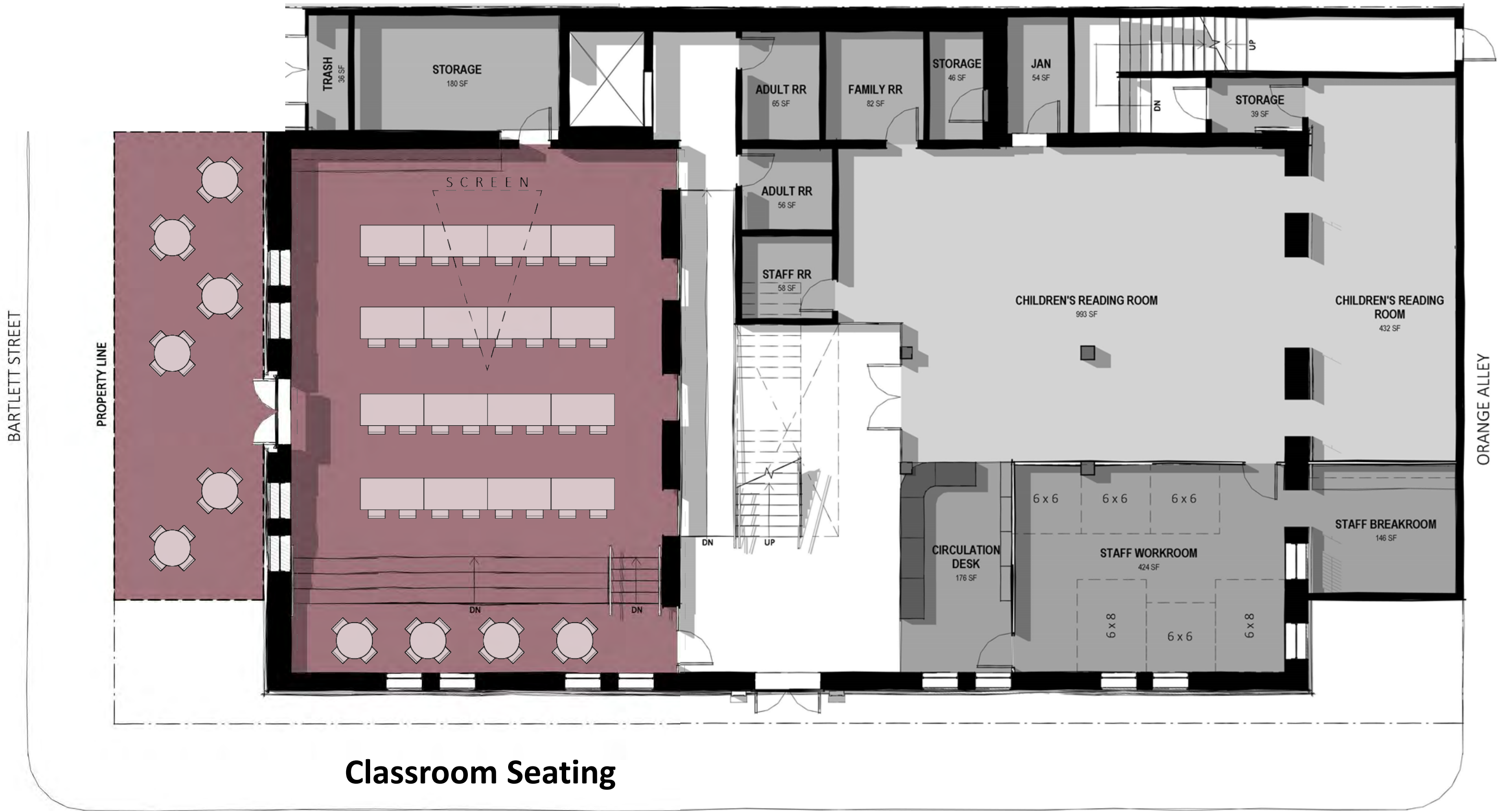


FLOOR PLAN TEST FIT | Community Multifunctional Areas



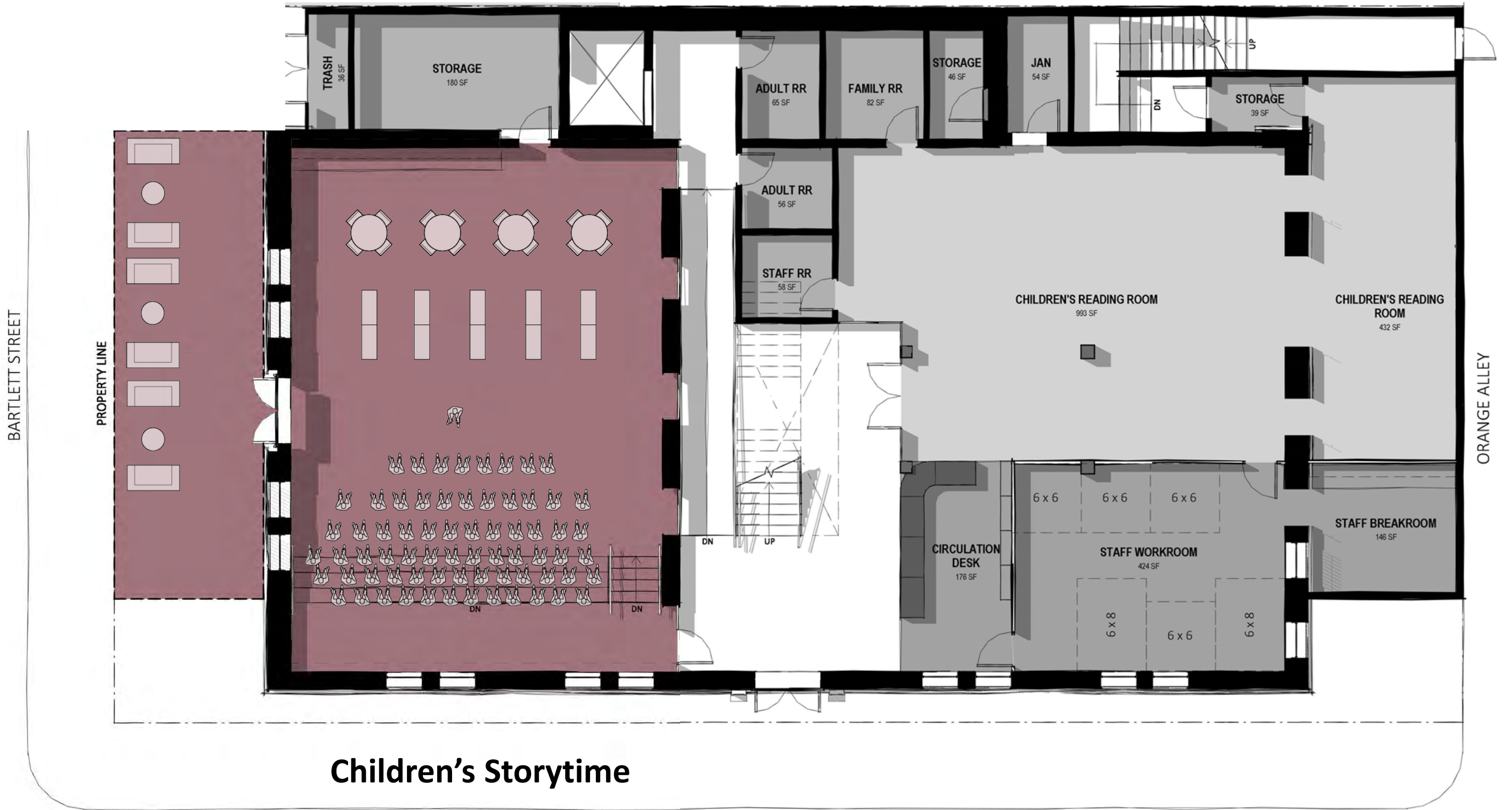
Lecture Seating

FLOOR PLAN TEST FIT | Community Multifunctional Areas



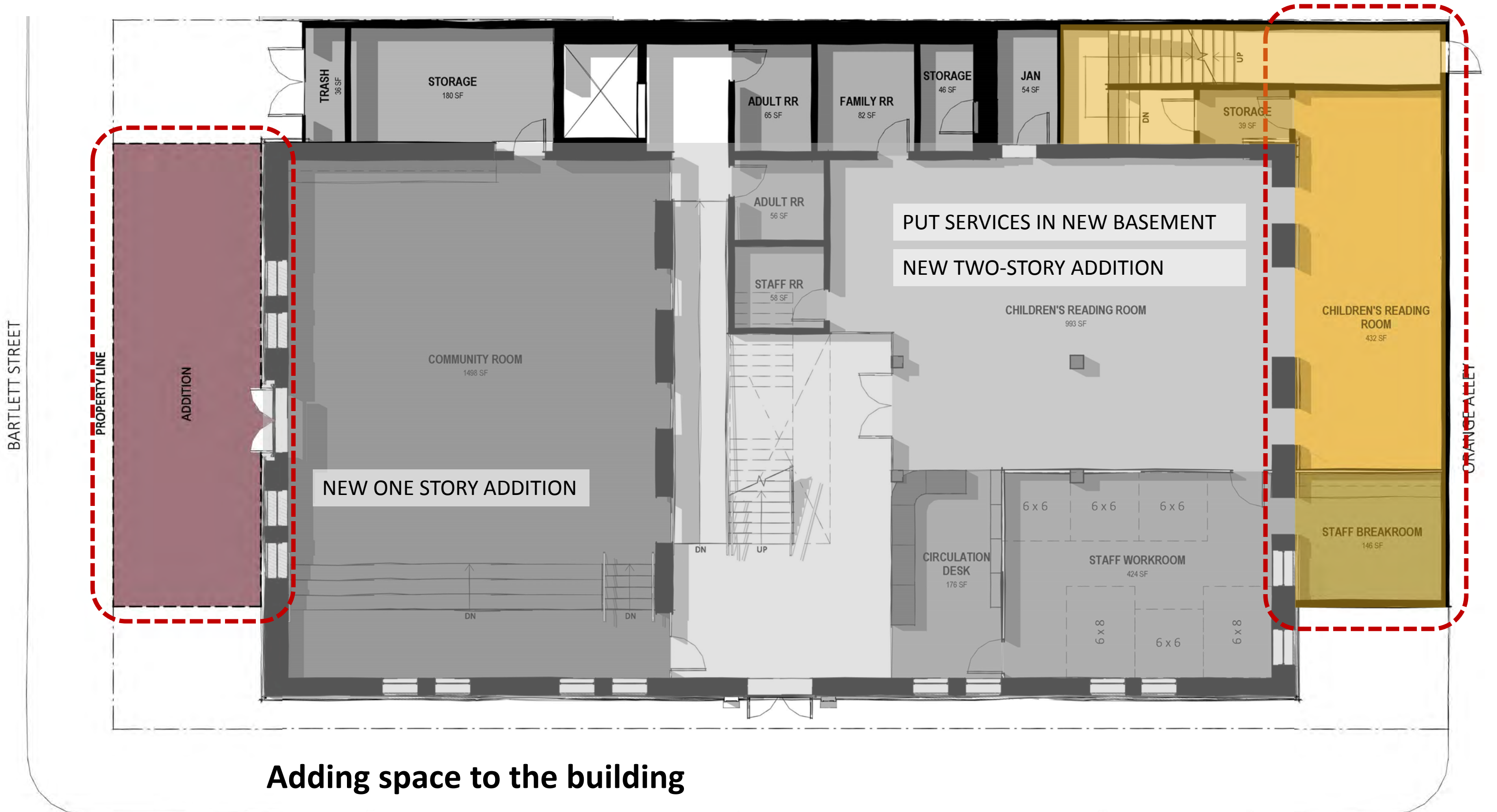
Classroom Seating

FLOOR PLAN TEST FIT | Community Multifunctional Areas

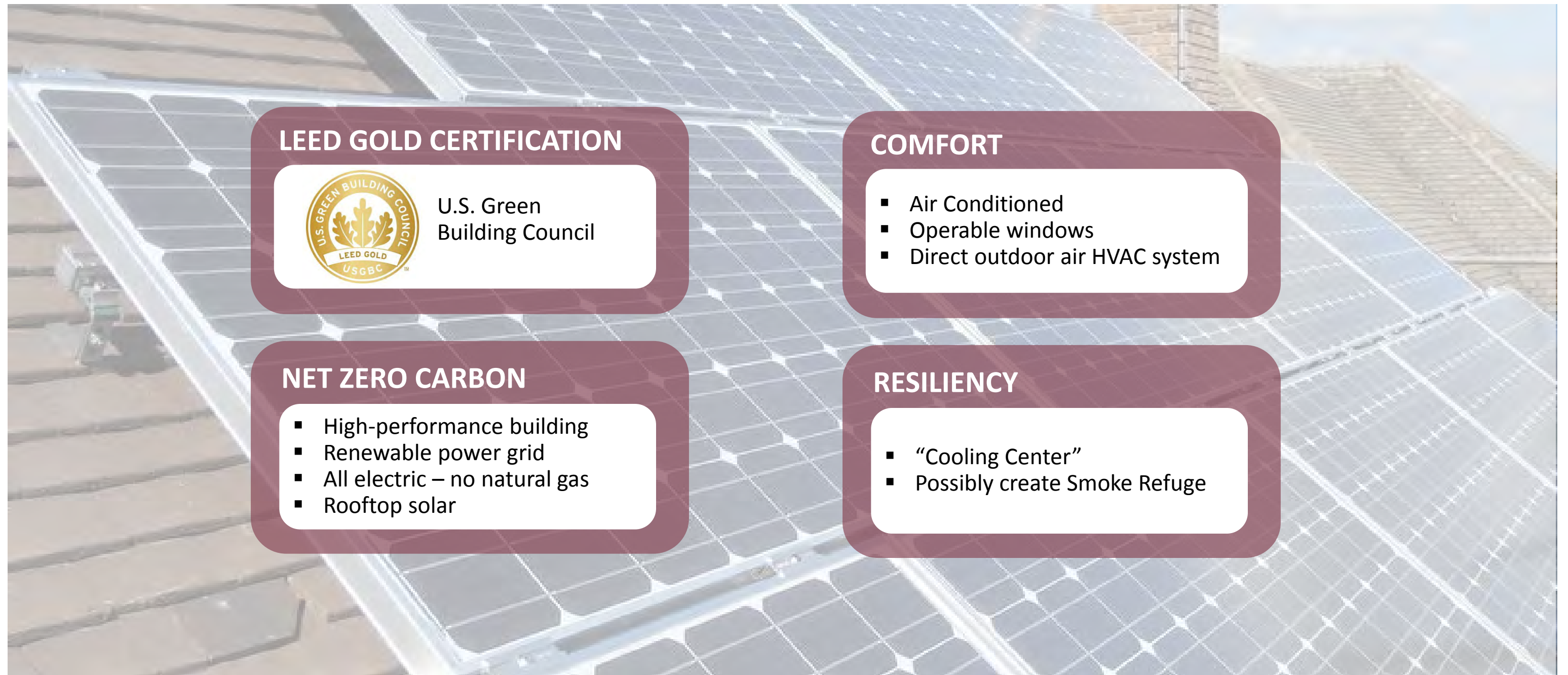


Children's Storytime

FLOOR PLAN TEST FIT | Building Expansion Options



ENVIRONMENTAL RESPONSIVENESS



LEED GOLD CERTIFICATION



U.S. Green
Building Council

COMFORT

- Air Conditioned
- Operable windows
- Direct outdoor air HVAC system

NET ZERO CARBON

- High-performance building
- Renewable power grid
- All electric – no natural gas
- Rooftop solar

RESILIENCY

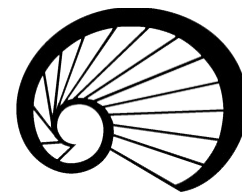
- “Cooling Center”
- Possibly create Smoke Refuge

DISCUSSION

UPCOMING...

- Architectural design
- Historic Preservation Commission
- Civic Design Review (SF Arts Commission)
- Community Meetings
- Earliest library closure is Summer 2020

Please complete the exit survey. Thank you!



San Francisco Public Library

For updates: www.sfpl.org/mission-renovation